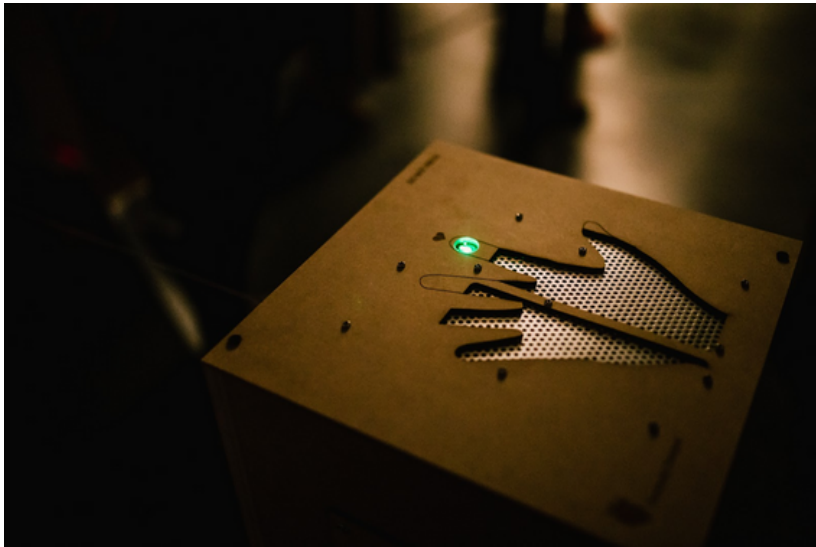


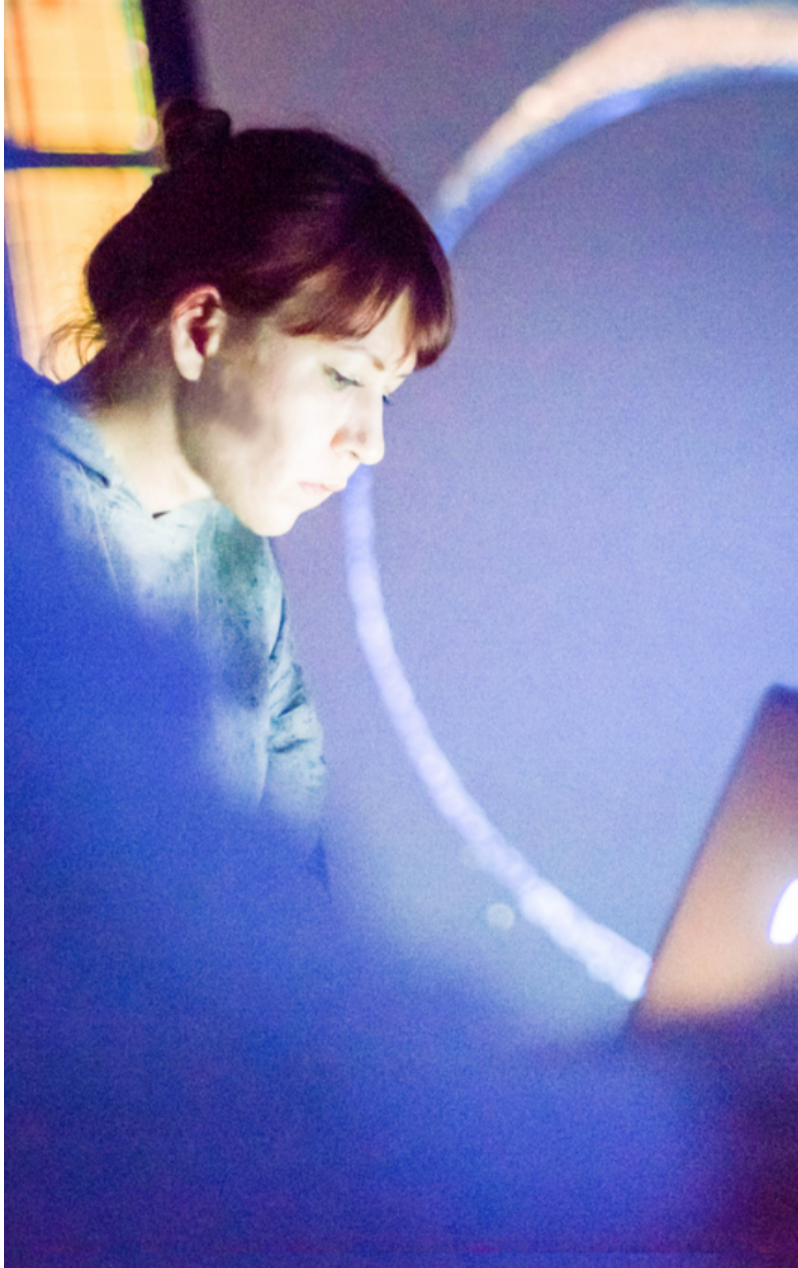
THE PROJECT



Positively Charged, Taipei, Taiwan Edition, 2017

POSITIVELY CHARGED is an installation where visitors are invited to use their bodies and physical activity to generate energy to power the work.

The question is whether the human body will ever be self-sufficient and able to produce enough energy to meet all individual power consumption needs.



KASIA MOLGA

Kasia Molga refuses to be labelled - design fusionist, artist, environmentalist, creative coder - **she is driven by a curiosity about how design, science and technology intersect and how art can reveal stories rooted in these intersections.**

For more than twenty years, **Kasia's main interest has been in the ever-changing relationship and perception of humans to their natural environment and to their more-than-human selves.** The material and immaterial links between the human body - its health and condition - and more-than-human organisms, organic, non-binary, biological matter and digital technologies, as well as inter- and intra-species care, repair, empathy and communication are recurring themes. **She makes objects, sculptures, audiovisual works, immersive experiences, hybrid interfaces or sometimes simple drawings or illustrated stories. She pays particular attention to the oceans and marine environments.**

EXHIBITIONS

She has exhibited all over the world, including at the :

- Centre Pompidou
- Tate Modern
- V&A Museum
- Ars Electronica
- Meta.Morf (NO)
- Translife Media Arts Triennial (Pékin, China)
- MIS (Sao Paulo, BR)
- Dutch Design Week (NL)

Kasia Molga is the recipient of numerous international awards, grants and residencies, including :

- STARTS EU Residency
- Wellcome Trust Award
- Ars Electronica 2012 Honorary Mention
- Creative Industries NL
- European N.I.C.E Award
- RESHAPE 2017 Honourable Mention
- LES RESPIRATIONS 2016 Special Prize.

Her work has been featured in international press such as the Huffington Post, the Guardian, Wired, Dutch Technology Review and the BBC.

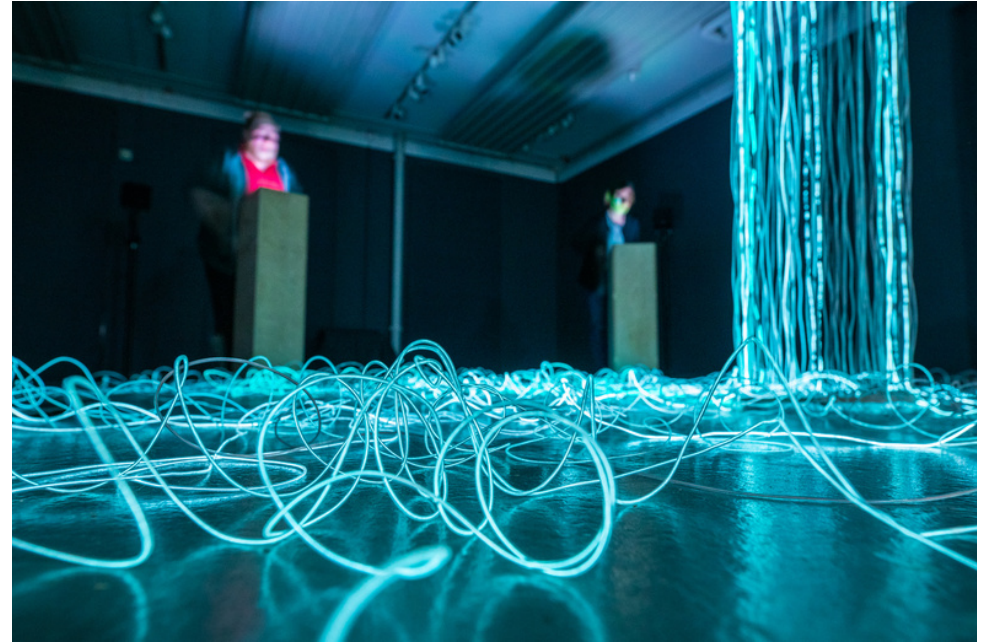
THE INTERACTIVE DEVICE

POSITIVELY CHARGED consists of 6 wooden stations, each with cranks and sensors. The individual elements of the installation respond to particular actions - for example, turning the crank activates the heart rate sensor which, after detecting the visitor's heart rate, turns on the light, sets things in motion or activates the musical soundscape.

This leads to the activation of the main part of the work - the receiving part of the energy" produced. Its form can vary depending on the place and the context. For example, in Taiwan, the main part of the exhibition consisted of more than 700 metres of electric wire representing the city's power lines.

Not only do visitors have to 'invest' in triggering the installation, but they also have to find the right rhythm in their movement: if they 'spin' too fast, much of the 'energy' produced is wasted as heat that escapes, creating an imbalance in the lighting and eventually turning off all the light wires.

If more visitors interact with the installation at the same time, it may be easier to turn (and produce energy), but it is also easier to create this imbalance. The visitors who contribute to the installation must therefore find a way to work together to ensure that the installation runs smoothly.



Positively Charged - Heartbeats, Festival Futur21, Germany, 2022



Positively Charged - Taipei, Taiwan Edition, 2017

TECHNICAL SHEET

SPACE

60 to 80 m2

TECHNICAL EQUIPMENT

The installation includes :

- 6 wooden stations (plywood) equipped with heart rate sensors and cranks
- 1 computer + sound card
- 6 speakers
- electroluminescent cables (light display)

TECHNICAL REQUIREMENTS

To be provided at the installation site :

- Electricity
- Internet connection
- Possibility of hanging the light cables from the ceiling (the architecture of the cables is made to measure according to the constraints of the venue and in consultation with the presenter)
- Possibility of fixing the wooden stations to the floor

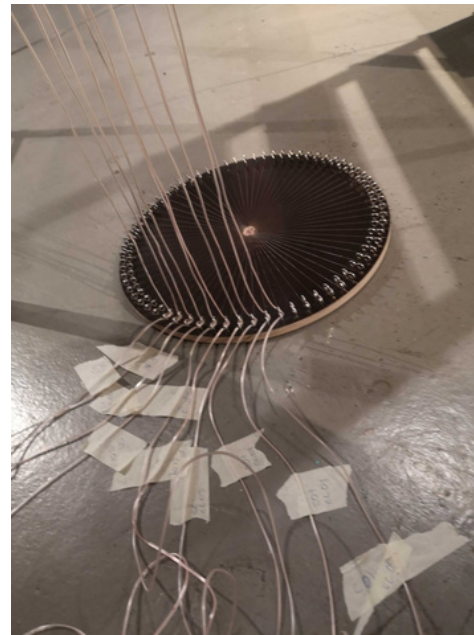
ASSEMBLY AND DISMANTLING

5 days of assembly - 3 people Studio Molga
 1 day of dismantling - 1 person Studio Molga

Personnel required: at least one stage manager in addition to the artists



Positively Charged - Taipei, Taiwan Edition, 2017



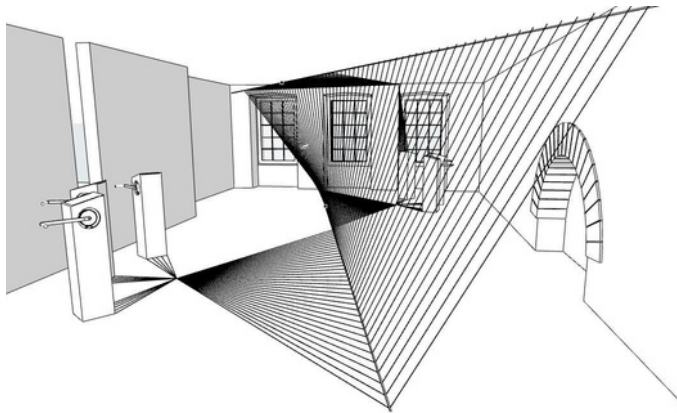
Light cable hanging system



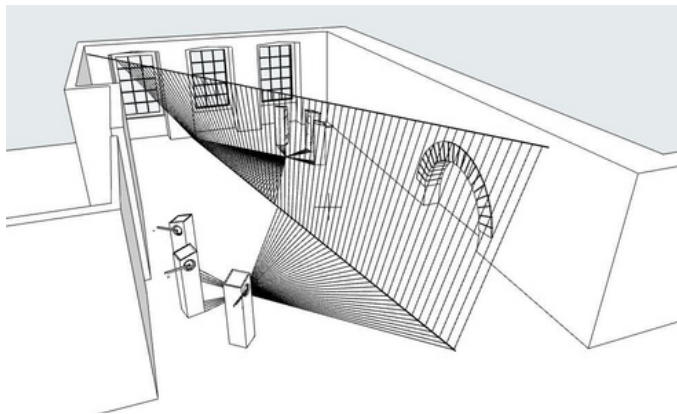
Wooden stations

PLAN AND PICTURES

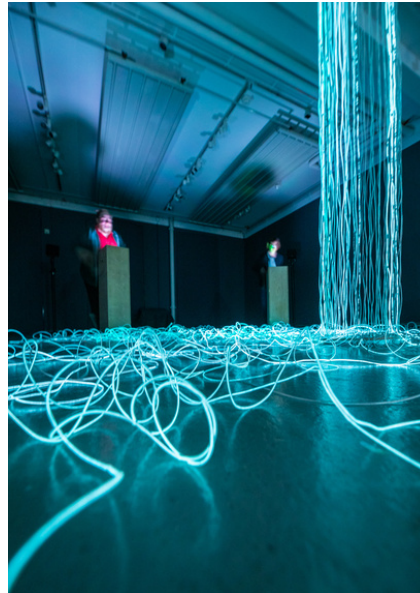
Plan and photos of the different possible shapes of the installation and the light display



Plan for the Taiwan Edition of Positively Charged in 2017



Plan for the Taiwan Edition of Positively Charged in 2017



Positively Charged - Heartbeats, Festival Futur21, Germany, 2022



Positively Charged - Heartbeats, Festival Futur21, Germany, 2022

VIDEOS

Taiwan edition, 2017

https://www.studiomolga.com/art_POSCHARG.html

Futur21 festival edition, Germany, 2022

<https://youtu.be/vXnM7bzKA1Y>



POSITIVELY CHARGED / INSTALLATION GENERATIVE

CONTACTS

CONTACT

DARK EUPHORIA

3 rue Chicot
13012 Marseille

Marie Albert - Head of production

malbert@dark-euphoria.com

06 63 39 84 91